

THE PLANK

Newsletter for the Chelsea Men's Shed

Volume 1, Issue 1

July 2008

What is the Shed?

An icon for Australian men is the shed, traditionally standing somewhere in our backyards. It holds an important place in our culture; there are memories, experiences, shared skills and socializing.

So the idea of a *Men's Shed* was born. It's a place for blokes to come and be with other blokes and do things in a shed. It is well known that to maintain good health requires many factors: a positive self esteem, feeling productive and valuable to society, having social relationships and being active.

So the Shed is there for men to share and use a wide variety of tools, pursue their interests in pastimes and hobbies and spend time with other blokes of similar interests. Not only that, they learn new skills and use tools for the first time or keep old skills honed and productive.



Pictured from left: Steve Rose, Pastor of Chelsea Church of Christ; Keith Holt, Supervisor of the Men's Shed; the late Hon. Don Chipp; Colin Duggan, Programs Co-ordinator.

But it's more than that; it's for blokes who might not be good with their hands but who would like to talk with other blokes over a cup of tea or coffee.

It's for blokes who are retired, been made workplace redundant, who may be short or long term unemployed, or who may be living alone. Age does not matter. All you have to be is a bloke.

The Men's Shed was officially opened by the late Hon. Don Chip on 1 August 2006; he was our original patron. Also attending the opening was former Mayor of Kingston, Topsy Petchey, and local State member Jenny Lindell, plus 150 members of the public.

Expressions of interest from the local business community and individuals are sought to become members of the Shed Mates Group of Sponsors, Partners and Supporters.

Please contact Gary Rogers at the Shed on Wednesdays or Thursdays or telephone him on 9773 0301 or come to our Sausage Sizzle at lunch time on Wednesdays.

Sheddie of the Month



Keith Holt has been with the Men's Shed since its inception.

He was formerly a welder maintenance fitter who retired at 70 years of age.

He was at the first meeting on 24 August 2004 and his enthusiasm for the project was lively.

Keith and the Minister, Steve Rose, went to Seaford to see a shed which was to be pulled down and erected at the back of the Church of Christ property. With others, he helped with the erection of the shed. It was a proud moment in his life.

Keith is a long time elder of the Church of Christ in Chelsea. He has a passion for Christianity to be used in the community in a practical way. The Men's Shed was an ideal project in his eyes.

As a reliable supporter of the Shed, he has hardly missed a day.

The other occupants of the Shed enjoy his presence. They see him as a warm friendly personality. "All the guys get on well with each other," Keith said, "and they enjoy a respectful exchange of ideas."

The men are also very talkative and it's up to Keith to ensure that they put their heads down and make some useful items.

Keith hopes that the shed will continue in its present form, giving men an outlet to display their craftsmanship.

From the Minister

The Men's Shed has been operational for nearly 2 years where we have had a steady flow of occupants. Many things have been built by the men, and I have been surprised by the quality of the workmanship.

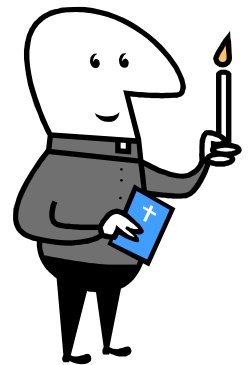
I sense a satisfaction within all the men; they are being useful to themselves and to the community. The best thing about the Men's Shed is that anyone can come along and participate. You don't have to be an expert; all you need is a willingness to learn and you will be helped along the way.

The future looks good for the Men's Shed.

I encourage all those who read this newsletter for the first time to come and browse and see if it is for you.

God Bless,

Steve



Bereavement Notice



We are saddened to announce the passing of Des in May after a long illness.

Des had been a Sheddie for over 12 months.

Our thoughts are with his family.

Current Activities

Wednesday Sausage Sizzle

Lunch time at the Men's Shed on Wednesday is a sausage sizzle.

The men gather around for a snag and continue their chatting about the projects they are currently involved with.

It is a fulfilling lunch and well deserved.



Monday	Central Bayside Community Health Network Men's Support Group
Tuesday	Skills for the Future (WFTD)*
Wednesday	Chelsea Men's Shed Workshop Day Skills for the Future (WFTD)* Sausage Sizzle
Thursday	Chelsea Men's Shed Workshop Day Introduction to Computers

* Work for the Dole (WFTD)

Upcoming Activities

Blantyre Gnomes

Are you a brown thumb, veggie patcher or hanging basketer?

Chelsea Men's Shed invites you to our **Blantyre Gnomes** sessions on Wednesdays and Thursdays from 9.30a.m. to 3.30p.m. each day.

Come along and join others to potter around, grow veggies, and join in the shed activities.

Call 9773 0301 for more details.



Sheddies Corner

A place for sheddies to share whatever they feel may be of interest to others. It could be somewhere you have visited, a recipe, a joke or some useful information.

The Men's Shed is great as everyone knows
Men getting together it all just flows

Hammering and sawing it can be hard work
I enjoy it all because I'm no clerk

My mates are helpful their work is exact
We finish our projects that's our pact

The time does fly when you're having fun
By the end of the day the work is done



Females miss us because we're not at home
"The men are out who will answer the phone"

It's for my man but he's down at the shed"
Busy in life it's the way ahead

No women allowed that is the rule
Some think that's harsh others cruel

Men need an outlet to voice their views
We chat together about all the news

Paul Keamy

The Plank

Newsletter for the Chelsea Men's Shed

Co-Ordinator

Colin Duggan— Phone/Fax 9773 0301

Email admin@chelseamensshed.org.au

Shed Mate

Keith Holt— Phone/Fax 9773 0301

Where are we: rear 3 Blantyre Ave
Chelsea



Sponsor Page

It would be great to see your name on this page. If you're interested in being a Sponsor, Partner or Supporter please contact Gary Rogers at the Shed on Wednesday or Thursday on 9773 0301 or join us at our Sausage Sizzle on Wednesdays 11.30—12.30



The Commonwealth Department of Employment and Workplace Industrial Relations has provided \$16,000 for the Skills for the Future - Work for the Dole project, in which the participants are undertaking 7 modules of the Certificate II in Business, and establishing the Office of the Chelsea Men's Shed.



Jobfind, Frankston and Cheltenham, is the Community Works Co-ordinator for the project and act as the overall Project Manager.



Longbeach PLACE Inc. Chelsea's Neighbourhood House delivering ACFE funded training, is the Sponsor for the project, and engaged the services of the Work for the Dole Supervisor and the Skills for the Future Facilitator.



The Shed is the Host for the program and provides the location of the Computer Room and Classroom for the Skills for the Future, and the *real life* office environment for the Work for the Dole component.



Chelsea Men's Shed is a Community Development Programme of CareWorks Inc. The Community Welfare and Support organisation of the Church of Christ Victoria & Tasmania, and delivered through Chelsea Careworks, the Community Support agency of Chelsea Church of Christ. Prepared by Skills for the Future Chelsea Men's Shed participants.

